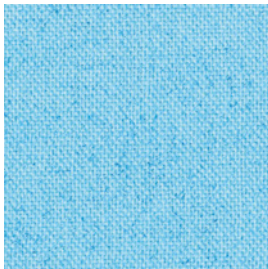


PECTIN SOILING⁺

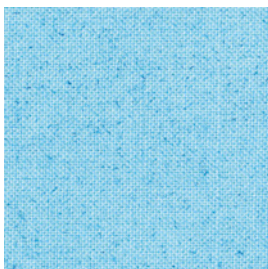
For the Assessment of Pectinases

The test fabrics are soiled with dyed pectin. The dyestuff makes the pectin present on the fabric visible.

article 180
soiling on cotton



article 181
soiling on polyester/cotton



Article 180/181 are sensitive to pectinase affected by temperature.

They are insensitive to other enzymes and bleaching agents. Most usable for liquid detergent.

Influence of pectinase

