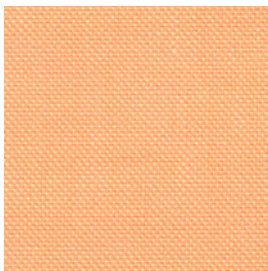


# STARCH SOILING<sup>+</sup>

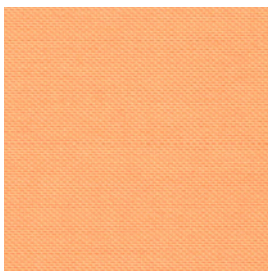
For the Assessment of Amylases

The test fabrics are soiled with dyed maize starch. The dyestuff is chemically bound to the starch and this serves to make starch present on the fabric visible.

**article 161**  
starch on cotton

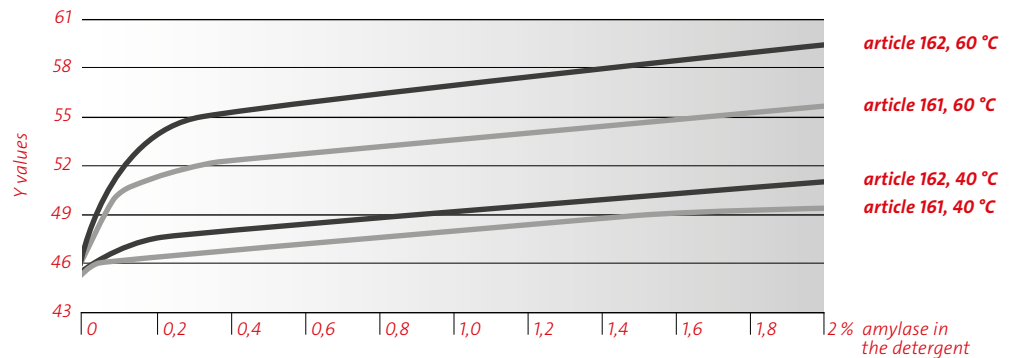


**article 162**  
starch on polyester/  
cotton



The water-soluble degradation products resulting from the influence of the amylase are flushed away. In the process they take along the chemically bound dyestuff. The depth of colour of the test fabric is thus always a measure of the amount of starch or its degradation products which are still clinging to the fabric.

## Influence of amylase



## Correlation of starch/Y value

